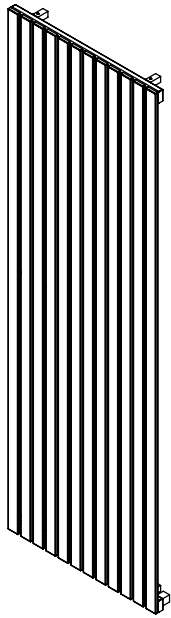


LUNAR

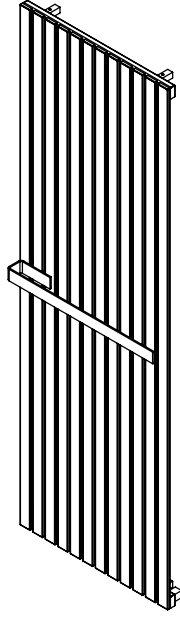
INS-VS1

ALL MEASUREMENTS ARE IN MILLIMETRES

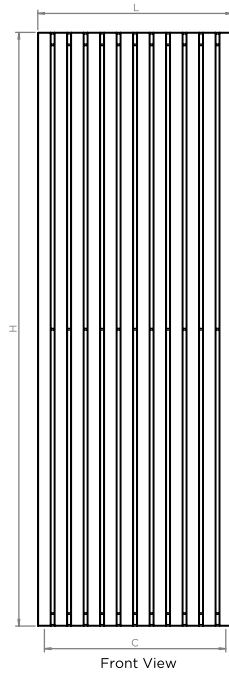
MANUFACTURED FROM STAINLESS STEEL



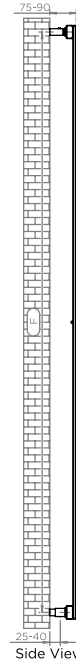
Lunar



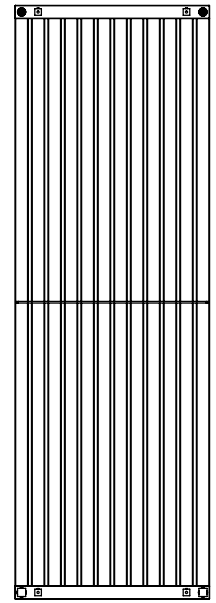
Lunar LTB Accessories



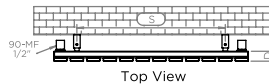
Front View



Side View

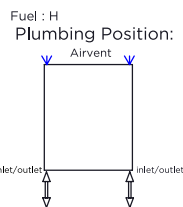
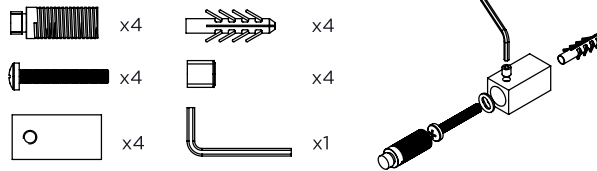


Back View



Top View

Installation Accessories:



Vertical mount
All Dimensions are in mm
Max. Working Pressure: 10 Bar
Max. Working Temperature: 95° C
Inlet / Outlet : 1/2" BSP

Manufacturing Tolerance : - 5 mm

PRODUCT CODE	Height	Length	Depth	Pipe Centres	Bracket Centres	
	H mm	L mm	D mm	C mm	F mm	S mm
LUN1505	1500	240	30	200	1460	100
LUN1507	1500	340	30	300	1460	200
LUN1510	1500	490	30	450	1460	350
LUN1515	1500	740	30	700	1460	600
LUN1520	1500	990	30	950	1460	850
LUN1805	1800	240	30	200	1760	100
LUN1807	1800	340	30	300	1760	200
LUN1810	1800	490	30	450	1760	350
LUN1812	1800	590	30	550	1760	450
LUN2005	2000	240	30	200	1960	100
LUN2007	2000	340	30	300	1960	200
LUN2007T	2000	320	30	280	1960	180
LUN2010	2000	490	30	450	1960	350
LUN2012	2000	590	30	550	1960	450
LUNT85	40	240	-	-	-	-
LUNT87	40	340	-	-	-	-
LUNT810	40	490	-	-	-	-

Technical specifications are subject to change without prior notice.

AEON is the designer heating division of Pitacs Limited.
Pitacs Limited, Bradbourne Point, Bradbourne Drive, Tilbrook, Milton Keynes,
Buckinghamshire, MK7 8AT, UK

T: +44 (0)1908 271155 E: info@pitacs.com W: www.aeon.uk.com

