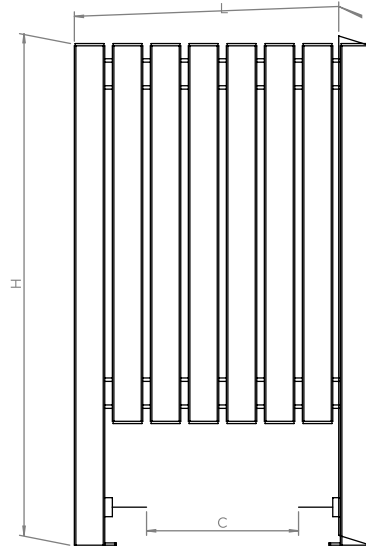
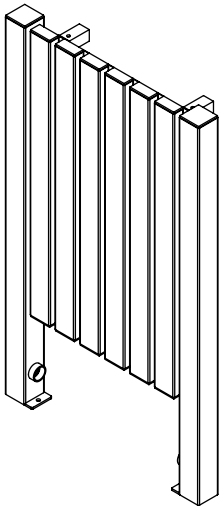


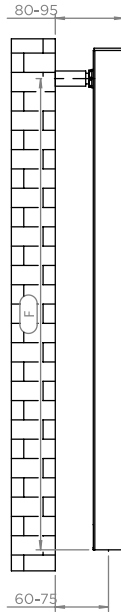
ARAT L

ALL MEASUREMENTS ARE IN MILLIMETRES

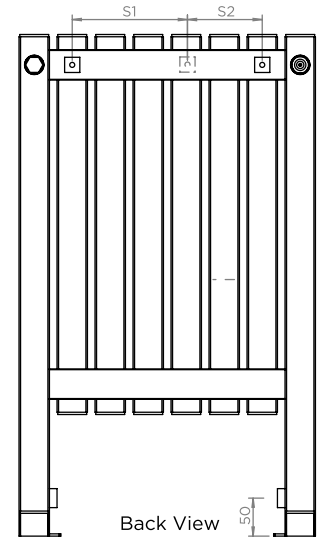
MANUFACTURED FROM STAINLESS STEEL



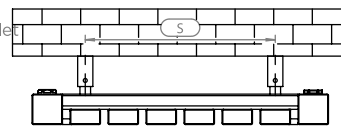
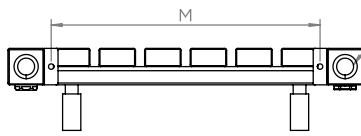
Front View



Side View

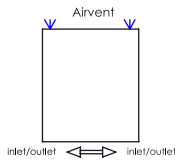


Back View



Top View

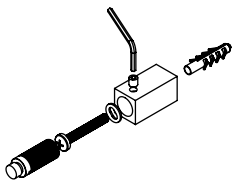
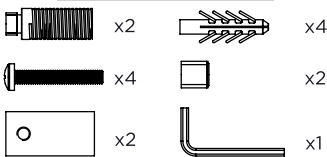
Plumbing Position:



Vertical mount
All Dimensions are in mm
Max. Working Pressure: 10 Bar
Max. Working Temperature: 95° C
Inlet / Outlet : 1/2" BSP
Fuel : E/H/D

Manufacturing Tolerance : - 5 mm
Note: Dimension (S1,S2) available for minimum 28 profiles

Installation Accessories:



PRODUCT CODE	Height	Length	Depth	Pipe Centres		Bracket Centres	
	H	L	D	C	F	S (S1-S2)	M
	mm	mm	mm	mm	mm	mm	mm
ARLB-6650	660	390	40	200	620	250	295
ARL10-6650	660	490	40	300	620	350	395
ARL12-6650	660	590	40	400	620	450	495
ARL14-6650	660	690	40	500	620	550	595
ARL16-6650	660	790	40	600	620	650	695
ARL20-6650	660	990	40	800	620	850	895
ARL24-6650	660	1190	40	1000	620	1050	1095
ARL28-6650	660	1390	40	1200	620	650-600	1295
ARL32-6650	660	1590	40	1400	620	750-700	1495
ARL36-6650	660	1790	40	1600	620	850-800	1695
ARL40-6650	660	1990	40	1800	620	950-900	1895
ARL8-7660	760	390	40	200	720	250	295
ARL10-7660	760	490	40	300	720	350	395
ARL12-7660	760	590	40	400	720	450	495
ARL14-7660	760	690	40	500	720	550	595
ARL16-7660	760	790	40	600	720	650	695
ARL20-7660	760	990	40	800	720	850	895
ARL24-7660	760	1190	40	1000	720	1050	1095
ARL28-7660	760	1390	40	1200	720	650-600	1295
ARL32-7660	760	1590	40	1400	720	750-700	1495
ARL36-7660	760	1790	40	1600	720	850-800	1695
ARL40-7660	760	1990	40	1800	720	950-900	1895

Technical specifications are subject to change without prior notice.

AEON is the designer heating division of Pitacs Limited.
Pitacs Limited, Bradbourne Point, Bradbourne Drive, Tilbrook, Milton Keynes,
Buckinghamshire, MK7 8AT, UK

T: +44 (0)1908 271155 E: info@pitacs.com W: www.aeon.uk.com

