

REPLACEMENT POWER HEADS

MOTORISED VALVES

40003916

FEATURES

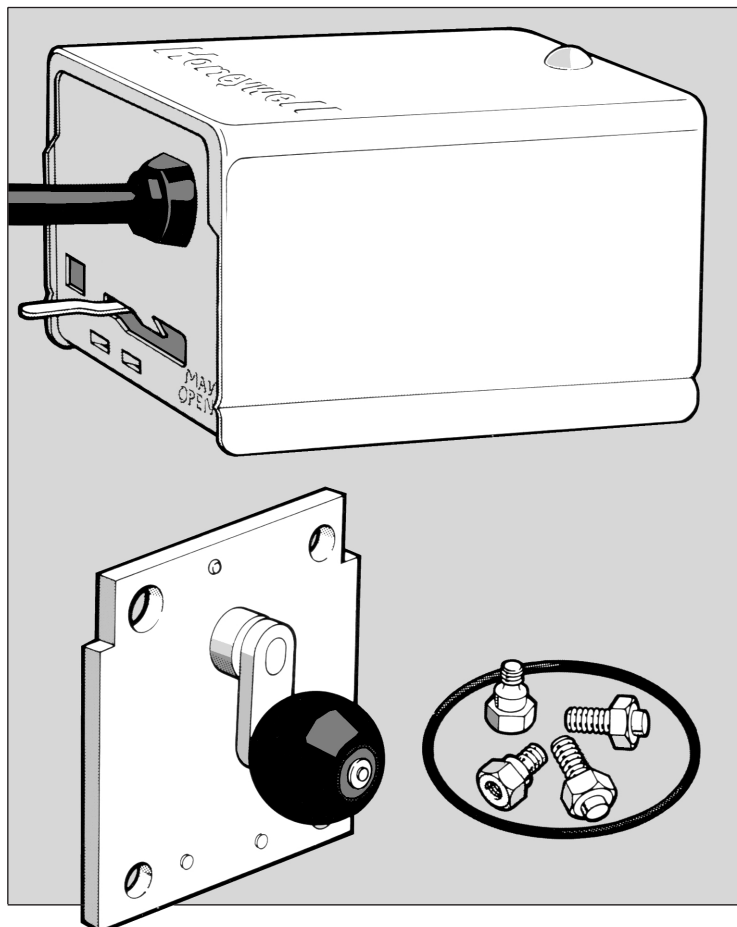
- One power head for each valve series.

- Power head assembly can be replaced without drain down.

OPTIONS

- Adaptor plate assembly allows old style valves to be updated to replaceable power head type.

- Ball and 'O' ring kit.



APPLICATION

The 40003916 power heads enable the complete power head assembly to be replaced, without draining down, on V4043, V4044 and V4073 series valves.

On older style valves, which did not have the replaceable head feature, the adaptor plate assembly can be used to upgrade the valves to allow the replaceable power head to be used.

■ Installation

When making a like for like replacement of the power head only, ensure that the Auto/Manual lever on both the installed and replacement power heads is in the Manual position.

The power head is held to the valve body with two fixing screws which are held captive in the power head base.

If upgrading an older style valve it will be necessary to drain the system water level to below the zone valve. The adaptor plate assembly is held in position by four screws (supplied).

■ Specification

Voltage Rating : 230VAC 50Hz

Power Consumption : 6W

Ambient Temperature :50° Max.

N.B. Check with the appliance manufacturer before replacing an actuator on valves fitted in a boiler to ensure correct replacement is used.

■ Wiring

Replacement of the power heads on V4044 series and V4073 series valves involves only colour for colour replacement of the flying lead conductors.

When replacing the power head on a V4043C zone valve it will be necessary to electrically isolate the ORANGE, GREY and WHITE conductors which are connected to the auxiliary micro-switch.

If replacing $\frac{3}{4}$ " BSP or 22mm V4043H zone valve power heads, it is necessary to electrically isolate the WHITE conductor if the auxiliary micro-switch is being used to control, for example, the system pump and boiler; if the auxiliary switch is not being used, then the GREY, ORANGE and WHITE conductors should be electrically isolated.

■ Ordering Specification

40003916 - 001

Replacement power head for V4043C and V4043H series 2-port zone valves.

40003916 - 002

Replacement power head for V4044 series 3-port diverter valves.

40003916 - 003

Replacement power head for V4073 series 3-port mid-position valves.

40003918 - 006

Adaptor plate and ball assembly for V4043C and V4043H series valves.

40003918 - 007

Adaptor plate and ball assembly for V4044 and V4073 valves.

272742A CARD

Replacement ball and 'O' ring kit for V4043, V4044 and V4073 valves.

